

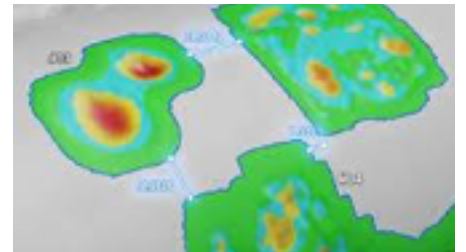
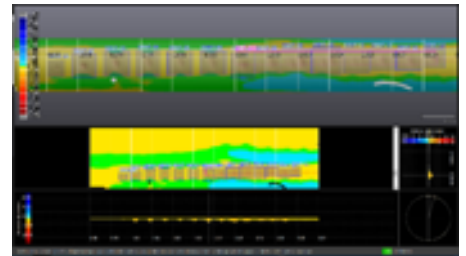
# 3D LASER MAPPING

Producers are facing increasing pressure from regulatory authorities and environmental groups to guarantee the integrity of their pipeline networks, while trying to keep maintenance costs to a minimum. The use of surface inspection tools that are both efficient and produce reliable results are of the utmost importance.

Echo NDE has Integrated the HandyScan 3D portable scanner into its fleet. When combined with Echo's skilled and knowledgeable technicians, this cutting edge technology with Pipecheck software allows its operators to save time and money without compromising diagnostic results, public safety, or the integrity of the assessments.

## FEATURES AND ADVANTAGES:

- Scanning Speed up to 80 times faster than Pit Gauge Technique
- On-the-go scanning capable of being used in house or on site
- Ability to quantify ILI performance by correlating pig data against Pipecheck data to determine accuracy of ILI
- Ability to extract corrosion depth inside mechanical damage
- Precise detection of integrity flaws in multiple areas with accuracy of 0.025 mm
- Analysis of a number of areas including corrosion, mechanical damage, depth, length and width
- Customizable pass/fail criteria and code compliant to ASME B31G
- Ability to evaluate external damage associated with corrosion under insulation (CUI) and coating failures
- Suitable for facility or ditch inspections



### PHONE/WEB:

P: 866-347-7042  
www.echonde.com

### MAILING ADDRESS:

59 Burnt Park Drive  
Red Deer, AB  
T4P 0J7

### CONTACTS:

DANNY JUTRAS: Business Development | Djutras@echonde.com  
JEFF LEEDAHL: Managing Director | JLeedah@echonde.com